



# PILING



**VAN ELLE**  
TOTAL FOUNDATION SOLUTIONS

# Experts in delivering extensive piling and geotechnical solutions across the UK

- **Full end to end capability;**  
from ground investigation, design and value engineering through to all types of geotechnical solutions
- **UK's largest fleet of over 30 open site piling rigs;**  
covering a range of engineering techniques to suit various project requirements
- **Provider of geotechnical solutions for over 36 years;**  
Since 1984 we have been setting strong foundations across many markets in the construction industry. We have worked with all the leading main contractors, engineers, developers and occupiers to deliver successful projects.

High volume Continuous Flight Auger (CFA) piling

Large Diameter Piling (LDP) and Cased CFA (CSP) for major structures

Sectional Flight Auger (SFA)

Driven precast concrete and steel tube

Expertise in design and contract management

Ground investigation and pile testing



Cased CFA piling at Grantley Hall hotel and leisure

## Recent Case Studies

### Driven - Precast Concrete (PCC)

- **Beam Park (Phase One)**  
**Client:** Countryside Homes  
Installing precast concrete (PCC) driven and CFA piles for a new housing development in the East of London.  
**Rigs:** Soilmec SF50 and Juntann PMX22

### Driven - Steel Tube

- **Keadby Power Station - Wind farm substation**  
**Client:** Amey  
Installing various top-driven steel tube piles to provide foundations for the new substation that supports the offshore wind farm  
**Rigs:** Junttan PM20

### Infrastructure and Utilities

- **Keadby Power Station (Phase Two)**  
**Client:** Siemens AG  
Installing foundations utilising CFA and driven steel tube for the main combined-cycle gas turbine (CCGT) power station facility including substantial cooling tower  
**Rigs:** Llamada-P140TT
- **Southern Link Road, Worcester**  
**Client:** Alun Griffiths  
Large rotary piling for new link road on the A4440 Worcester Southern Link Road improvement scheme  
**Rigs:** Soilmec SR-75



Large diameter piling for A4440

6  
in-house designers providing value engineering

200  
plus piling projects on average per year

75  
highly trained site supervisors and managers

8  
dedicated graduates and apprentices

# Recent Case Studies

## Infrastructure and Utilities

- **Wichelstowe Southern Access Underpass, M4 Swindon**

**Client:** Alun Griffiths

Installing our largest rotary bored piles to date at a diameter of 1220mm to support the new underpass structure.

**Rigs:** Soilmec SR-75



*Solimec SR-75 providing foundations for large warehouse development in Mansfield*

## Residential

- **Millbrook**

**Client:** Bennett Construction Ltd

CFA piling for the development of apartments and dwellings on former army barracks site in London

**Rigs:** Lamada P105TT



*Installing our largest rotary bored piles at 1220mm at Wichelstowe for M4 underpass*

## Commercial

- **Aspire Bristol**

**Client:** BAM Construction

Undertaking the coring works to the foundation slab of a large, highly congested city centre site in Bristol.

**Rigs:** Soilmec SR95 and SR75

## Industrial

- **Mansfield Summit Park**

**Client:** Bowmer & Kirkland

We installed 2000No. CFA piles to provide foundation support for a 1,000,000 sq. ft. warehouse development

**Rigs:** Llamada 135 and Soilmec SR-75

- **Warth Park**

**Client:** Winvic Construction Ltd

Creating a retaining wall for large industrial development utilising CFA piling

**Rigs:** Soilmec SF-50 & Llamada 135



*Coring works in Bristol for BAM Construction.*

## Mixed Use

- **Swansea Central Regeneration**

**Client:** Buckingham Group

Installation of CFA piles to provide foundations for new multi-level car park and new 3,500 seater arena within Swansea city centre

**Rigs:** Llamada 130 & 135 and Soilmec SR-75

- **Goodluck Hope Riverside Development**

- **Client:** Ballymore group

As well as creating 804 new homes, the CFA piling undertaken after we had completed unexploded ordinance survey work (UXO) provided the foundations for the development 2,235 sq m of commercial space



*CFA piling with the powerful Llamada P160TT*

# Recent Case Studies

## Deep Basements

- **Corsham Street - 5-star boutique hotel London**  
**Client:** RGB Group  
Installation of large diameter rotary piles to create secant retaining wall for a deep basement consisting of four floors  
**Rigs:** Soilmec SR-95
- **St Albans Basement - Leisure development**  
**Client:** Morgan Sindall  
Installation of retaining wall for a small basement scheme in St Albans, London utilising 400mm diameter piles  
**Rigs:** Llamada P105TT

## Public Sector

- **A63 Hull – Princess Quay overbridge**  
**Client:** Interserve  
Rotary bored piling using support fluid  
**Rigs:** Soilmec SR-95
- **Taunton Railway Station**  
**Client:** John Sisk & Son Ltd  
CFA bored piling for the foundations for new multi-story car park at Taunton railway station  
**Rigs:** Soilmec SF50 and Lamanda P140TT
- **Sugar House Primary School (New Build)**  
**Client:** MID Group  
CFA piling for a new primary school at the heart of the Sugar House Island Urban Regeneration project, in East Stratford, London  
**Rigs:** Soilmec SF50 and Llamada P140TT

## Piling solutions:

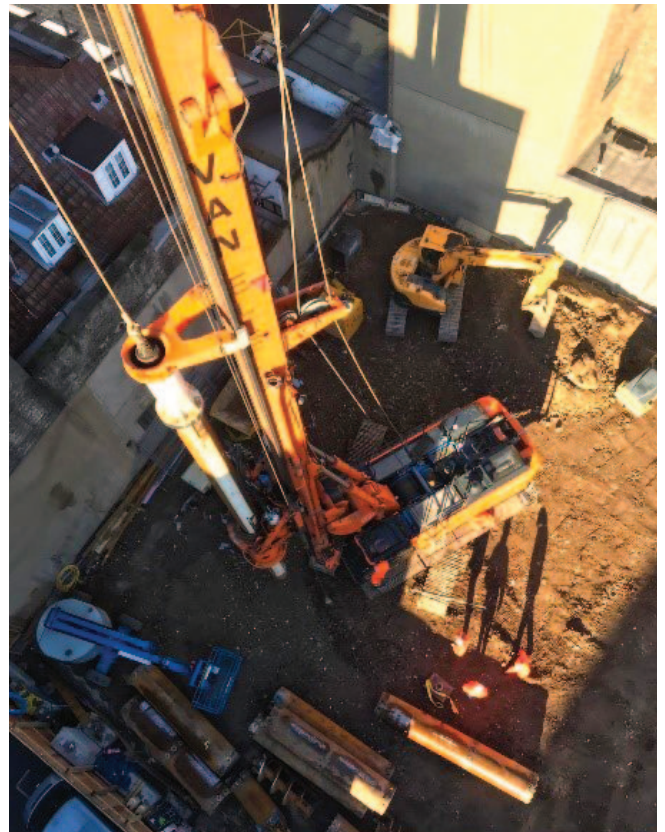
- Continuous flight auger (CFA)
- Sectional flight auger (SFA)
- Large diameter piling (LDP)
- Cased CFA (or CSP)
- Secant and contiguous piled retaining walls
- Modular precast bases and foundation beam
- Capping beams and slab
- Pile Testing
- Ground investigation
- Soil nailing and ground anchors
- Sheet piling
- Drilling & grouting
- Vibro and rigid inclusions ground improvement
- Driven steel tube
- Driven section



Retaining wall installation in St Albans, London for basement scheme



Large diameter rotary piling for A63 improvement scheme



SR-95 piling in a tight space for deep basement at Corsham Street, London

# Capabilities and services:

## Llamada P105 up to P160



<b>Weight</b>	38 to 104 tonnes	<b>PILE CAPABILITY</b>
<b>Length</b>	Up to 12.5m	<b>Depth and Diameter:</b>
<b>Width</b>	Up to 4.75m	33m depth at 1200mm diameter
<b>Height</b>	Max (height) 39.0m	35m depth at 1050mm diameter
<b>Techniques</b>	CFA	

Capability to install 1050mm diameter CFA piles up to 35m providing significant programme and cost benefits over Bored Cast in Place piles.

## Soilmec SR-30 up to SR-95



<b>Weight</b>	91 tonnes	<b>PILE CAPABILITY</b>
<b>Length</b>	11.0m	<b>Depth:</b>
<b>Width</b>	4.7m	CFA - up to 30m
<b>Mast</b>	(height) 26.0m	Rotary - up to 74m
<b>Techniques</b>	BCIP and CFA	<b>Diameter:</b>
		CFA - up to 1200mm
		Rotary - up to 2100mm

Although the Soilmec SR-95 is a multipurpose rig, it is best suited to BCIP piles and can install temporary casings up to 35m deep. Selection of a BCIP technique simplifies installation of deep reinforcement cages (over 21m) as concrete placement takes place after the installation of the cage

## Junttan PMX22



<b>Weight</b>	38 to 104 tonnes	<b>PILE CAPABILITY</b>
<b>Length</b>	Up to 12.5m	Max Pitch Pile length – 15.0m
<b>Width</b>	Up to 4.75m	Min Pitch Pile Length – 4.0m (VE minimum stock Length)
<b>Height</b>	Max (height) 39.0m	Max pile size – 400mm sq PCC and 610mm diameter TDT
<b>Techniques</b>	CFA	Min Pile size – 190mm sq PCC & 140mm diameter TDT
		Hammer – HHK with a 4T, 5T & 6T option (new hammer)



## Plant and engineering workshop

In order to provide rapid support to our extensive fleet of piling rigs we have a dedicated and responsive team of plant fitters and engineers. Ready to respond to breakdowns to help maximise utilisation on sites and reduce standing time, we are equipped to ensure continuity in work programmes.

### Services we provide:

- Welding and fabrication
- Plant repair and modifications
- Servicing and maintenance

### In-house design services

Our talented in-house team carry out bespoke designs for piling solutions, giving clients a single point of contact who will work with the contract manager to oversee the project. Designers are involved early to give a full life appreciation of developments and understanding of key drivers. Early involvement can give an opportunity for value engineered schemes making for more thorough cost effective results.

### Precast production facility

Based on site at our head office in the East Midlands, our precast production facility provides the supply of just-in-time Smartfoot modular ground beams and bespoke concrete piles. Working 24/7 the factory holds enough stock of piles for jobs to be completed swiftly, maintaining optimum levels to provide an efficient service to our piling teams.





## Ground investigation

STRATA Geotechnics provide an extensive portfolio of ground investigation and testing solutions.

- Comprehensive range of in-house rigs
- Directly employed drilling and testing teams
- Innovative specialist plant, especially for restricted access requirements

### DRILLING & SAMPLING

- Cable percussion
- Rotary open hole/coring
- Window sampling

### REPORTING & MONITORING

- Gas monitoring
- Noise and vibration monitoring
- Laboratory testing
- Factual and interpretative reporting

### PILE TESTING

- Integrity testing
- Dynamic testing
- Static load testing



Load testing for pile bearings by STRATA Geotechnics



Cable Percussion sampling for the re-development of a UK holiday park.

## Dedicated FORS accredited transport fleet serving our UK wide projects

Rigs are delivered and collected via our dedicated plant and logistic fleet based at our main facility in Kirkby in Ashfield. Specially designed beavertail rigid wagons mean we can access the most restricted piling areas.



## Contact Us

Please contact one of our piling team.

01773 580 580

www.van-elle.co.uk  
info@van-elle.co.uk

Phil Carr Estimating Director  
phil.carr@van-elle.co.uk

Malcolm O'Sullivan Piling Director  
malcolm.osullivan@van-elle.co.uk

Jan Jones Business Development Manager  
jan.jones@van-elle.co.uk