

LOGISTICS PARK BUILT ON FORMER LANDFILL THANKS TO RIGID INCLUSION TECHNIQUE

Van Elle has successfully installed more than 2,000 rigid inclusions on a former landfill site as our client says they look forward to working with us again.

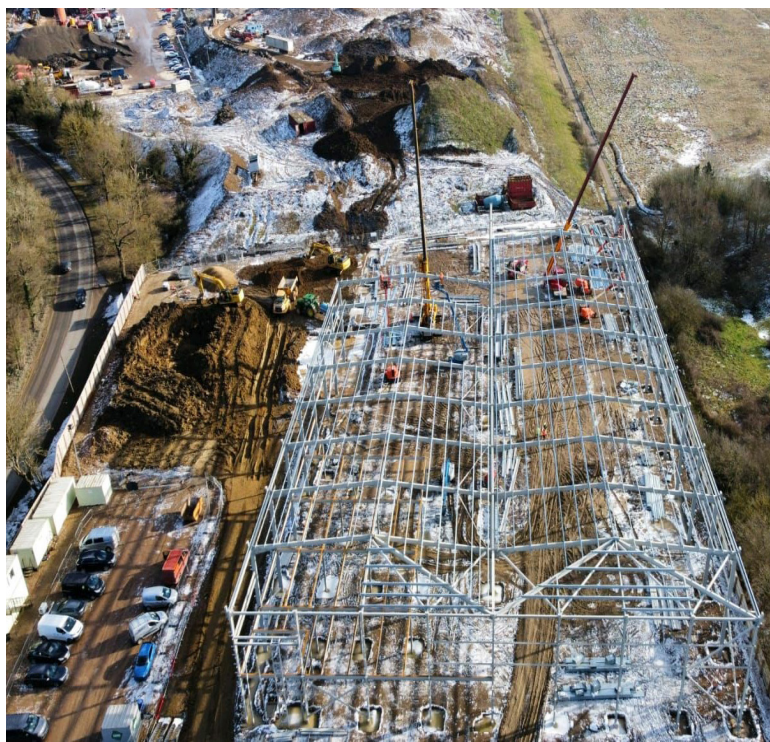
Our expert engineers safely installed the ground improvement for a new logistics park in Welwyn Garden City, Hertfordshire, using the innovative technique to combat environmental issues, including ground contamination and gases.

In total 2,302 columns were installed over the six week project, to create the base for the two industrial units on behalf of Dynamic Ground Solutions.

Hywel Jones, Commercial Manager for DGS said: "Thank you for all your efforts in concluding the works successfully and we look forward to working with you again in the future."

Two displacement leader rigs were used to install the columns that support pad foundations, along with ground bearing floor slabs on the circa £450,000 project.

Ground Improvement Director at Van Elle, Claire Garrett, said: "The industrial units were built over a former landfill site, so a displacement method ensured that there were no contaminated arisings generated. Groundworkers installed a load distribution mattress and adequate compaction was achieved during winter weather conditions."



OUR APPROACH

- VE** 2,302 no. up to 350mm diameter, rigid inclusions installed
- VE** Two displacement leader rigs used
- VE** Combination of pad foundations, strip footings, dock-levellers and ground bearing floor slabs
- VE** Challenging ground conditions including ground contamination and gases



PROJECT STATS



Circa £450,000



Six week duration



**Client: Dynamic
Ground Solutions**



**Welwyn Garden City,
Hertfordshire**